

TRANSPORTABLE BARGES

Built 2010
Hull Steel

CLASSIFICATION

Classification 2E
Flag Australian
Unique Identifier 457891 and 457892

MACHINERY

Make/Model TBA
Propulsion N/A
Main Engines N/A
Total Power (kW) N/A

SPEED AND CONSUMPTION

Full Operating N/A
Eco Operating N/A

CAPACITIES

Fuel N/A
Water N/A
Clear Deck 72sqm
Deck Load Rating 38 tonnes
Passengers 2D - 6
Genset N/A
Electrics N/A

COMMUNICATION EQUIPMENT

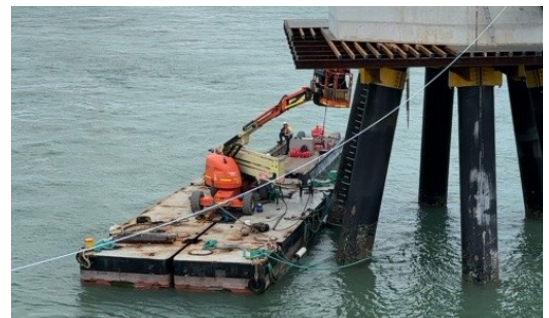
GPS, Sounder N/A
VHF Radio N/A
Compass N/A
AIS N/A

OTHER

Features Road transportable dumb barge

DIMENSIONS

Length 12 metres
Beam 3 metres each
Design Draft 0.339 metres (single)
Weight 13.97 tonnes (single)



FAST RESPONSE

CMG is based on the east coast of Australia and has the ability to deploy nationally.