



# Commercial Marine Group



Marine Solutions and Innovations

## **CAPABILITY STATEMENT**

INNOVATION | TEAMWORK | SAFETY | DIVERSITY | COMPLIANCE | SUCCESS

# Commercial Marine Group

## CONTACT DETAILS

### POSTAL

PO Box 7114, Hemmant, Queensland, 4174

### HEAD OFFICE - BRISBANE

7/41 Paringa Road, Murarrie, Queensland, 4172

P: 1300 19 19 53

M: 0427 471 634

E: [admin@commercialmarinegroup.com.au](mailto:admin@commercialmarinegroup.com.au)

### NORTHERN TERRITORY

2/111 Coonawarra Road, Winnellie, Northern Territory, 0810



**Commercial Marine Group**  
is based on the east coast of  
Australia and has the ability to  
deploy nationally.





# COMPANY PROFILE

Commercial Marine Group (CMG) is based in Brisbane, Australia and works on marine civil construction projects, with special capability in underwater activities. Our strengths are in working with marine infrastructure challenges.

Our core capability of marine construction services is underpinned by our ability to deliver above and below water specialist activities including project management. CMG's Team of Divers are experienced in accordance with AS2299:1 2015, but are also qualified in a range of trades such as vessel masters, fabricating, rigging and dogging, electrical, mechanical and engineering.

To compliment our diving capability, we employ highly skilling support staff such as engineers, designers and fabricators to deliver innovative and flexible solutions.

**AT CMG, WE UNDERSTAND THAT OUR PEOPLE ARE OUR BIGGEST ASSET, SO WE INSTIL A CULTURE OF SAFETY, INNOVATION AND SUCCESS.**

With a successful track record in delivering outcomes for major commercial contractors, CMG consistently displays a high level of quality and attention to detail.

**We deliver bespoke solutions, which can only be achieved through having the right people with the right experience to work together to achieve something great.**

Compliance to standards and safety are key elements of the Company's success and customer satisfaction. CMG operates under an ISO accredited system which ensures continuous improvement across the Company.







# OUR COMPANY

Meet Commercial Marine Group's Management, Engineering and Project Management Team.



**RAY CRAMPTON**  
Managing Director



**NICK AYRES**  
Engineering Director



**BEVAN LAMB**  
Operations Manager



**TEAL DOVEY**  
Project Engineer



**TYSON MAHER**  
Project Manager



**JAMES MIDDLETON**  
Project Engineer



**ANDRE ERASMUS**  
Dive Supervisor



**JEREMY CARROLL**  
Dive Supervisor



**KELLIE CRAMPTON**  
HR Manager

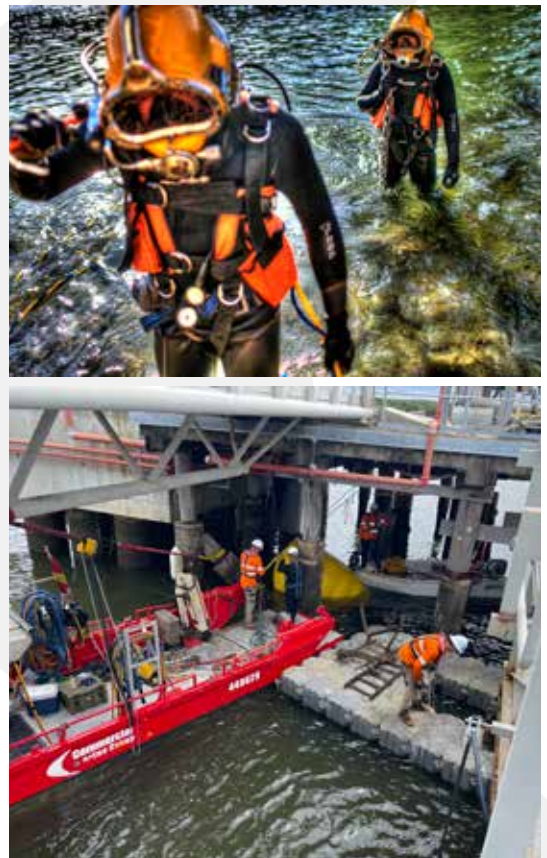


# QUALITY MANAGEMENT, SAFETY AND ENVIRONMENTAL

With a core team that has been part of our operation since its early days, CMG is proud to have a culture built on the safety of our people and our Clients.

CMG is fully committed to ensuring the continuous improvement of its Quality Management, Safety and Environmental responsibilities. We have worked hard to put in place systems that have achieved ISO compliance and we continue to build on them to improve our worksites and productivity. That is why we:

- 1. MAINTAIN A SAFETY CULTURE FROM TOP MANAGEMENT THAT IS PASSED DOWN TO OUR STAFF**
- 2. ENSURE STAFF ARE INVOLVED IN DEVELOPING SYSTEMS TO ENCOURAGE A PRO-ACTIVE SAFETY ENVIRONMENT**
- 3. ENSURE COMPLIANCE TO LEGISLATION THROUGH REGULAR REVIEW**
- 4. ENCOURAGE AND SUPPORT FURTHER TRAINING AND DEVELOPMENT OF ALL OUR PEOPLE**





# MARINE CIVIL CONSTRUCTION

## INSPECTION

CMG's team carries out various inspection scopes from state government approved structural bridge and scour inspections, post flood investigation, water infrastructure and private and public marine structural and mooring surveys. CMG has access to the latest technology for pile integrity testing and seabed survey include 3D scanners, magnetometer, electrical integrity for cathodic protection and sub bottom profilers.

## INVESTIGATION

In conjunction with the inspection services, CMG's skilled personnel and engineering resources provide investigation surveys. These vary from detailed structural investigation to scour and environmental surveys of sensitive marine environments including the great barrier reef.

## JETTY WALKWAY TOP SIDE REMEDIATION

The core of CMG is the remediation of marine structures and installations. We offer many types of remediation including scour, concrete repairs, pile wall, structural steel and pile replacement. Our jack up pile and shore-based fender replacement techniques using specialist temporary works provide cost certainty and reliable solutions effortlessly perfected over years of experience.

## IN-HOUSE DIVE TANK

Our in-house fabrication yard and research dive tank facility allow us to trial and refine methods, resources and equipment to guarantee outcomes. We have a diverse range of high-performance underwater equipment including drills, chain saws, cutting, welding, and testing equipment.

## FABRICATION

Our customised workshop fabrication capabilities are extensive and deliver unique solutions. The Team work with a wide range of equipment to develop designs that suit project needs. An in-house fabrication solution means that CMG can respond quickly to Client needs and ensure quality delivery of services.





# MARINE CIVIL CONSTRUCTION

## COATING APPLICATIONS

We have in house NACE accredited coating applicators for paint applications and are experienced in types of high-performance fabric, polythene, fibre reinforced and carbon materials.

## CONCRETE REPAIR

We carry out repairs to concrete structures, including wrapping, coating, injection, epoxy and cementitious grouts. We have a range of underwater grout mixing and pumping equipment.

## DAMS & RESERVOIR

Our equipment is road transportable for easy and efficient access to the dams and reservoirs. We offer all range of services for the maintenance upgrade and new construction of reservoirs and dams.

## DEMOLITION & REPURPOSING

There is often a need to demolish, deconstruct or dismantle. CMG team are well versed in the unique hazards and risks of this work. CMG has expert knowledge in recovery of submerged vessels and items and where required works seamlessly alongside licensed demolition contractors. CMG thrives on minimising environmental and community impact, frequently presenting options to repurpose is core to our values.

## BASEMENT REMEDIATION

Repairing, replacing, upgrading pipelines and outfalls and their structures. in the marine environment.

## PIPELINES & OUTFALLS

CMG crews and methods are used in solutions for basements and under building foundations and structures.

## WATER INFRASTRUCTURE

CMG provides specialised solutions to inspecting and maintaining a range of water facilities such as reservoirs, potable water and contaminated waters. CMG are experienced in inspection and cleaning, leak detection and confined space work and have a number of long-term contracts for the systematic inspection and maintenance of key water assets.







# OTHER SERVICES

## ENGINEERING SERVICES

CMG in-house engineering capability provides engineering solutions through feasibility, detailed design, construction delivery and handover phases of the project. CMG Engineering works collaboratively with its Suppliers and Clients to provide unique and bespoke solutions. CMG provide feasibility studies and materials selection.

## PROJECT MANAGEMENT

CMG Project Managers have experience in managing small to complex projects and can be the single point of contact, coordinating subcontractors and specialist trades, plant, machinery and vessels.

## SALVAGE

CMG have the resources and experience to perform most salvages. Capabilities allow CMG to provide diving assistance only, or complete Project Management including specialised plant and equipment.

## SEARCH & RECOVERY

Search and recovery of vessels or other items can involve a combination of sidescan sonar and diving, both of which CMG is equipped to facilitate. CMG also have an ROV designed for confined spaces.

## SCREW-IN MOORINGS

CMG Divers provide mooring support to private and commercial Clients. Services include installation, replacement, maintenance and inspection. CMG can supply RPEQ screw-in moorings and are experienced in installation.

## ROV AND SIDESCAN SONAR

CMG have access to the latest technology in ROV and side scan sonar with experienced technicians to operate and present reports. We deliver the best device to suit your budget and needs.

## REEF/RESEARCH

CMG have been involved in many reef and research initiatives. We can supply occupational divers to assist research divers, or have our experienced personnel participate in developing solutions to unique subsea problems.

## DESIGN AND ANIMATION SERVICES

CMG offer design and animation services to complement our onsite delivery. Our inhouse animators can recreate the worksite in 3D, demonstrating procedures and mapping out complex worksites. Our inhouse designers are experienced in subsea engineering design and work across multiple programs.





# VESSELS



## MV PHOENIX

Classification	2C	Unique Identifier	444822
Length	11.52 metres	Beam	3.5 metres
Design Draft	0.6 metres	Weight	8.6 tonnes
Main Engines	2 x Suzuki 300hp, outboard motors		



## MV TROJAN

Classification	2D, 2C	Unique Identifier	452743
Length	10.5 metres	Beam	4.5 metres
Design Draft	0.8 metres	Weight	6.5 tonnes
Main Engines	2 x Yamaha 350hp		



## MV INVICTUS

Classification	2D, 2C	Unique Identifier	454927 / 7921 QC
Length	9.72 metres	Beam	3.5 metres
Design Draft	0.44 metres	Weight	7.5 tonne
Main Engines	2 x Suzuki DF250APX outboard motors		



## MV VIGILANT

Classification	2D	Unique Identifier	449629
Length	7.96 metres	Beam	2.59 metres
Design Draft	0.31 metres	Weight	3.2 tonne
Main Engines	2 x Suzuki 115hp outboard motors		



## MV PEGGY

Classification	2D	Unique Identifier	460997
Length	6.0 metres	Beam	2.39 metres
Design Draft	0.3 metres	Weight	
Main Engines	1 x Evinrude 200HP E200DCXIND		





# VESSELS



## MV BANDIT

Classification	2D, Non-Survey	Unique Identifier	458074
Length	6.0 metres	Beam	2.2 metres
Design Draft	0.4 metres	Weight	
Main Engines	Yamaha 90hp		



## MV CETUS

Classification	2D, (2C Restricted pending)	Unique Identifier	459860
Length	7.5 metres	Beam	2.6 metres
Design Draft	0.4 metres	Weight	3.2 tonne approx.
Main Engines	Twin 2021 Suzuki 175hp (260kW) outboard engines		



## BLUEY

Classification	2D	Unique Identifier	459385
Length	4.1 metres	Beam	2.59 metres
Design Draft	0.31 metres	Weight	265 kilograms
Main Engines	Single 36kW outboard engine		



## MUDDY

Classification	2D	Unique Identifier	460173
Length	4.1 metres	Beam	2.59 metres
Design Draft	0.31 metres	Weight	265 kilograms
Main Engines	Single 36kW outboard engine		



## TRANSPORTABLE BARGES


Classification	2D	Unique Identifier	457891 & 457892
Length	12.0 metres each	Beam	3.0 metres each
Design Draft	0.339 metres (single) / 0.524 metres (twin)	Weight	13.97 tonnes (single) / 36.97 tonnes (twin)



## MAKO BARGE

Classification	2D, 2C	Unique Identifier	429899
Length	12.0 metres	Beam	9.85 metres
Design Draft	0.659 metres	Weight	69.586 tonne





# OTHER ASSETS & CAPABILITIES

---

## ASSETS

---

- Dive Decompression Chamber (transportable)
- Transportable Pontoons / Barges
- Putzmeister Grout Pump
- Spitwater 6000PSI Water Pump
- Isuzu Truck with Hiab
- 410 Challenger Polycraft
- Trailers x 2
- Compressor and Nitrox Compressors – fixed and transportable
- Transportable Dive Spreads
- ROV
- Sidescan Sonar
- Research Dive Tank

## RAPID RESPONSE

---

CMG has capacity to respond swiftly to jobs and is contactable after hours for emergencies.







# OUR CLIENTS



Department of  
Primary Industries



**BHAGWAN**  
marine



**GrainCorp**



Desilting Solutions

**ARUP**



**BLIGH  
TANNER**

**INPEX**



Georgiou **brady**  
marine & civil

